

1. Swimming Pool
 - a. New Sand Filter
 - i. Casey has been in contact with Mark Moreau, he is waiting to hear back from his Hayward contact on the commercial filter pricing.
 - ii. We need to verify we have the funds available to purchase it. It will save us money in the long run.
 - b. Chemical management and cleaning.
 - i. Who did it last year? Planning to ask Mark to handle this too.
 - c. Lifeguard Management
 - i. Casey will handle hiring and paying the lifeguards as well as schedule management.
 - ii. How much do we pay them?
 - d. Card swipe locks. – Casey just needs to get in there to look at it and will be able to get it going.
 - e. Swimming lessons
 - f. Swim team
2. City of Edmond Easement Request for Sewer Line
 - a. Cody to bring related information.
 - b. See page 3 for parcel location
3. Rezoning issue for west of South Trail Ridge on Edmond Rd.
 - a. Cody to bring related information.
 - b. See page 4 for parcel location.
4. Park Maintenance
 - a. Adding outdoor trash cans near the playground equipment and by the tennis courts.
 - b. Replacing missing swings.
 - c. Adding additional tennis court lighting.
 - d. Finish tennis court fence.
5. Mowing and weed management
 - a. Who handles it now? Do we have a contract? There seems to be a lot of weeds, especially in the soccer field.
6. Association Dues
 - a. We need to draft statements and get them in the mail. As a part of the statement let's include a form that allows them to enter their email address and "opt-in" to receive their statements online in the future. **** These need to go out directly after the meeting.** Please see page 5 for the suggested statement letter.
 - b. Additional charge for paying online.
 - i. There will be a 2.2% + 30 cents fee for each transaction we take online. That's \$8.00 for regular dues.
 - ii. Do we want to pay the \$8? Should we attach an additional online charge? The full \$8, or should we meet in the middle and pay \$4?
 - iii. Casey needs to get a copy of our banking information and our proof of tax exempt status.

- c. Over-due Collections
 - i. Need an accurate accounting of who owes what.
 - ii. With the online system we will be able to do monthly automatic withdrawals to catch over-due homes up.
- 7. Temporary Members
 - a. There is an online application form as well as some cool imagery across the website to hopefully get people to sign up.
 - b. We need to prepare letters directing them to the website to sign up.
 - c. As of 4/18 we have 3 sign-ups from the website.
 - d. We need a process for creating the card-swipes and mailing them to temporary members.
- 8. Swimming pool and Soccer field reservations
 - a. Online system is ready and working. Perhaps we need a sign at the pool and at the soccer field instructing them to check the website.
- 9. Upcoming Events
 - a. Summer Clean-Up Day
 - b. Neighborhood Garage Sale
 - c. Any other ideas?

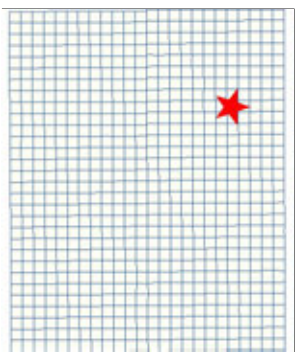


Plot in Question



This map is a user generated static output from an Internet mapping site and is for general reference only. Data layers that appear on this map may or may not be accurate, current, or otherwise reliable. THIS MAP IS NOT TO BE USED FOR NAVIGATION.

Map center: 35° 39' 31.2" N, 97° 31' 16.4" W



Legend

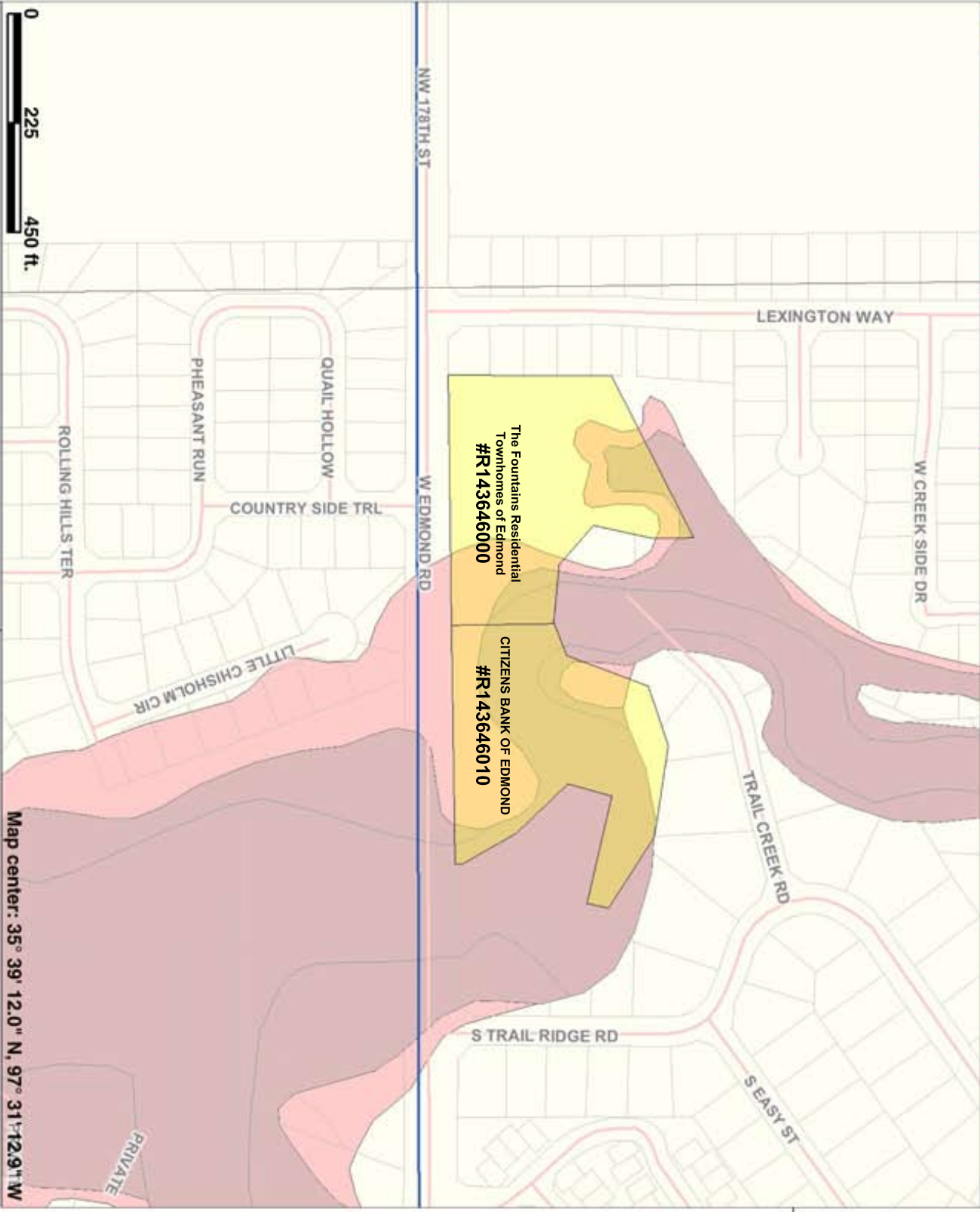
- Sections
- Streets
- Parcels
- North Canadian River
- Rivers & Creeks
- Lakes
- Floodplains
- Floodplain Zones
- Zone A
- Area Not Included
- Zone X
- Zone X (500-year)
- County Background



Scale: 1:1,895

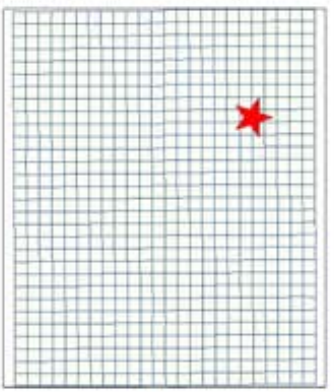


Zoning Issue



This map is a user generated static output from an Internet mapping site and is for general reference only. Data layers that appear on this map may or may not be accurate, current, or otherwise reliable. THIS MAP IS NOT TO BE USED FOR NAVIGATION.

Map center: 35° 39' 12.0" N, 97° 31' 12.9" W



- Legend**
- Sections
 - Streets
 - Parcels
 - North Canadian River
 - Rivers & Creeks
 - Lakes
 - Floodplains
 - Floodplain Zones
 - Zone A
 - Area Not Included
 - Zone X
 - Zone X (500-year)
 - County Background



Scale: 1:3,789

The Trails Association, Inc.

www.edmondtrails.com

Dues Statement

Due Date: May 15, 2011

Your yearly neighborhood dues for The Trails Neighborhood Association, Inc.

Invoice From:

The Trails Association, Inc.

P.O. Box 2411

Edmond, OK 73083

Item	Cost
Dues One year of The Trails Association, Inc dues.	\$350.00
Invoice Total:	\$350.00

Please make check payable to "The Trails Association, Inc."

and send to:

The Trails Association, Inc.

P.O. Box 2411

Edmond, OK 73083

Your neighborhood has a new website just for YOU. You can pay your neighborhood dues, reserve the swimming pool or soccer field, and get to know your neighbors online with our Neighborhood Forum. You can also learn about upcoming neighborhood events or projects. Go ahead and check it out! www.edmondtrails.com

Everyone has already been given a login.

Username: **lastname-housenumbers** Password: **housenumbers**

eg, username: davis-2321 password: 2321

please cut along line and return bottom with payment.

please cut along line and return bottom with payment.

AMOUNT PAYING: _____

OWNER NAME: _____

Go paperless with eStatements from The Trails Association, Inc.! Please include your email address in the box to the right and you will automatically be set up to receive your statement online next year.

HOME ADDRESS: _____

TELEPHONE: _____

EMAIL ADDRESS: _____

Please note you will no longer receive statements over the physical mail. Doing so will not only help save neighborhood costs but the environment too.

SIGNATURE: _____